

Overall Assessment of the Quality of Administrative Data Sources

3 high level views on input quality

Table 1. Evaluation results for the Source hyperdimension

	Exam Result Register	Higher Edu.	Sec. General Edu.	VAT
1. Supplier	+	+	+	+
2. Relevance	o	+	+	+
3. Privacy and security	+	+	+/o	+
4. Delivery	+	+	o	+
5. Procedures	+/o	+/o	+/o	o/-

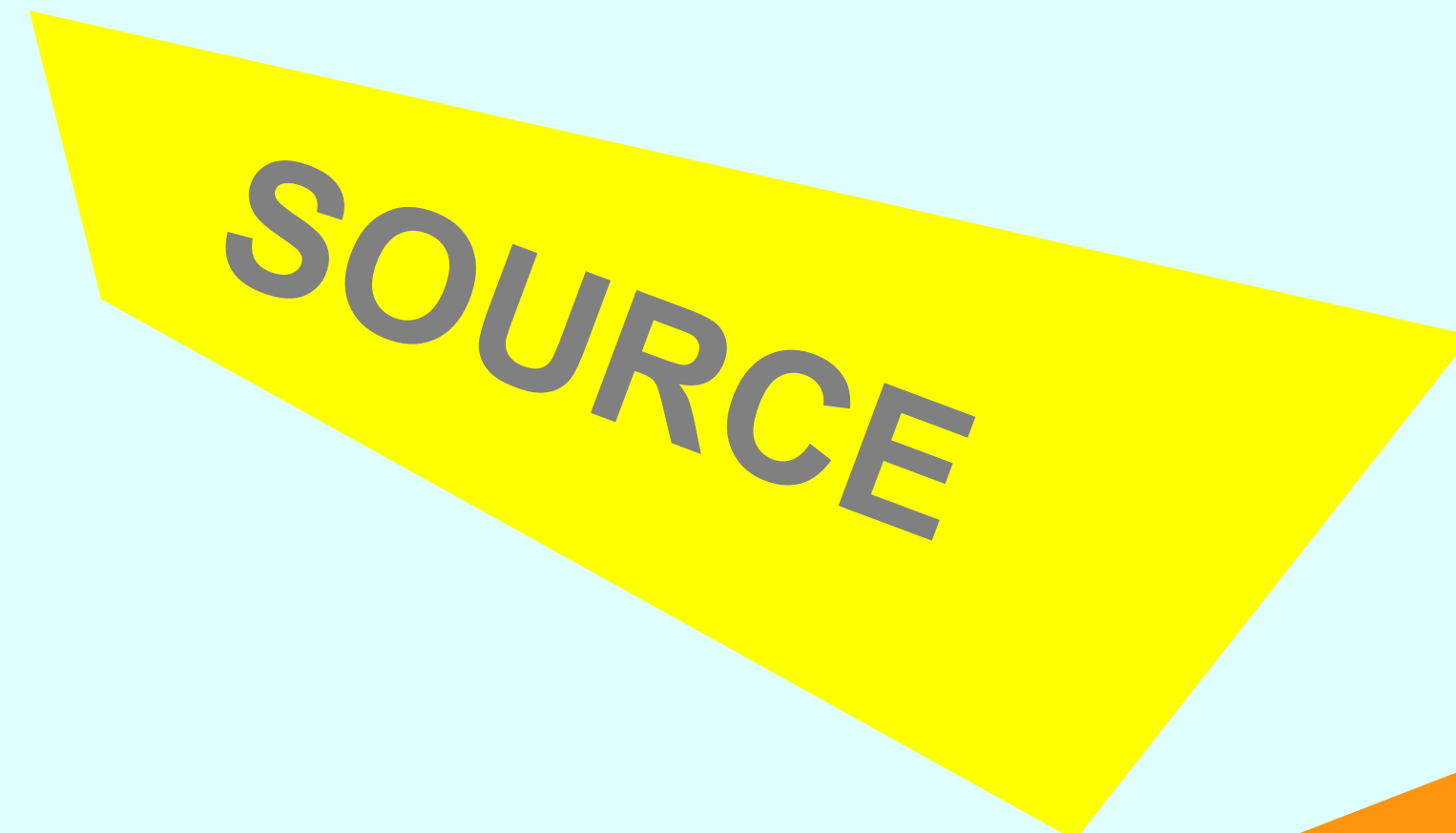
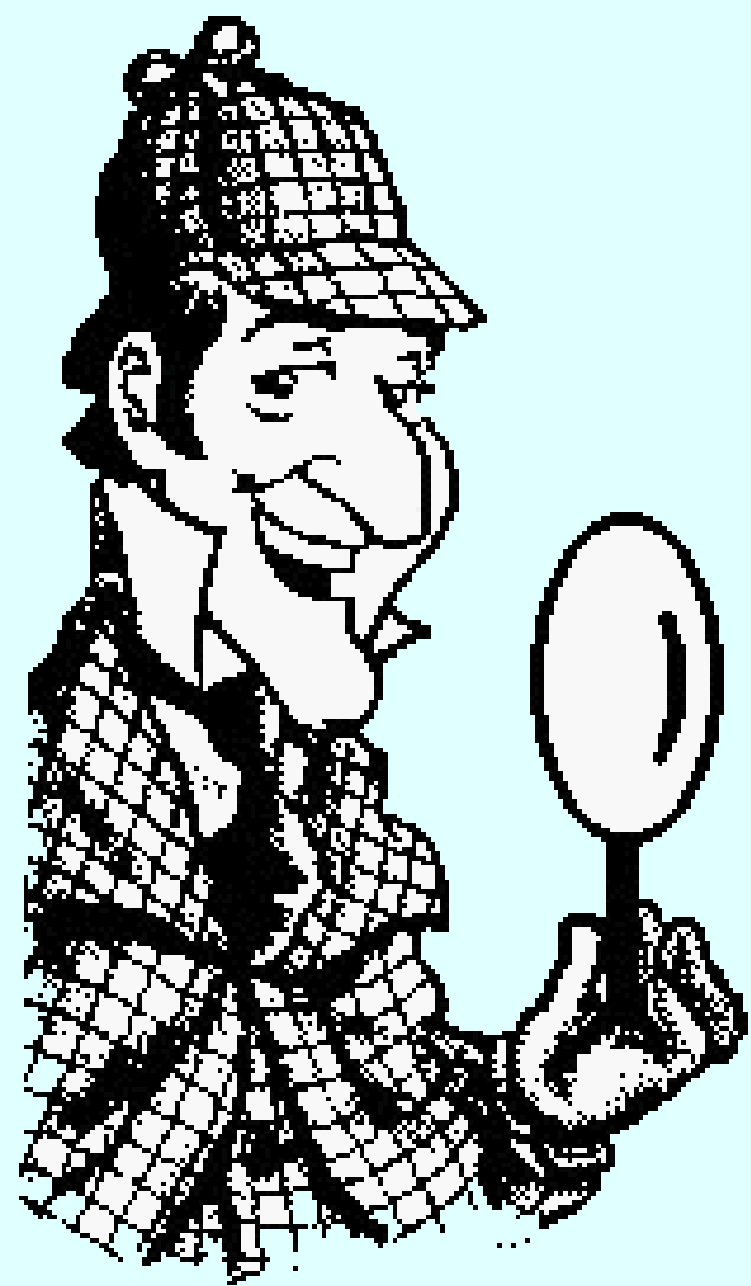
Table 2. Evaluation results for the Metadata hyperdimension

	Exam Result Register	Higher Edu.	Sec. General Edu.	VAT
1. Clarity	o	+	+	+
2. Comparability	+	+	+	+/o
3. Unique keys	+	+	+	+/o
4. Data treatment	?(o)	?(+)	?(+)	+/o

SOURCE

Focus on data source as a whole

- Contact information related
- Delivery related aspects
- and more



Statistics Netherlands
Division of Methodology and Quality
Methodology Department

Checklist

Quality of Secondary Data Sources

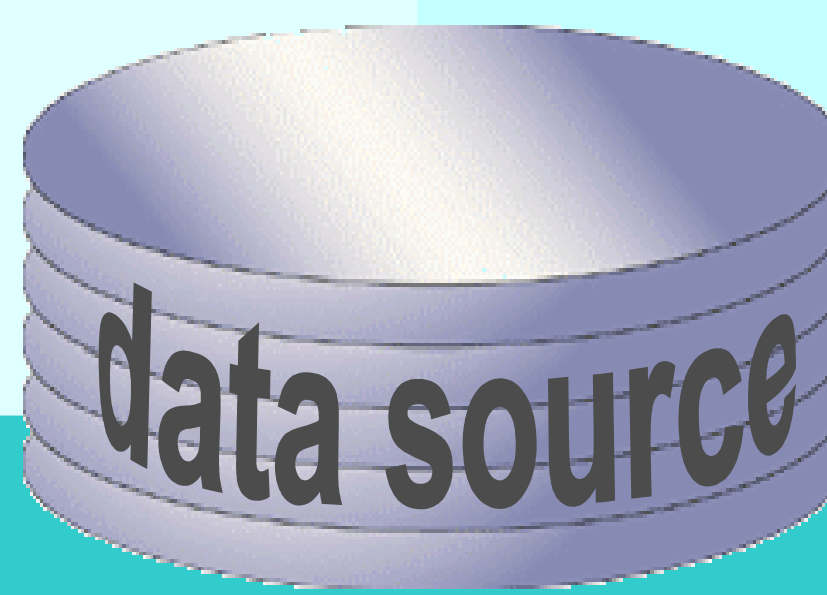
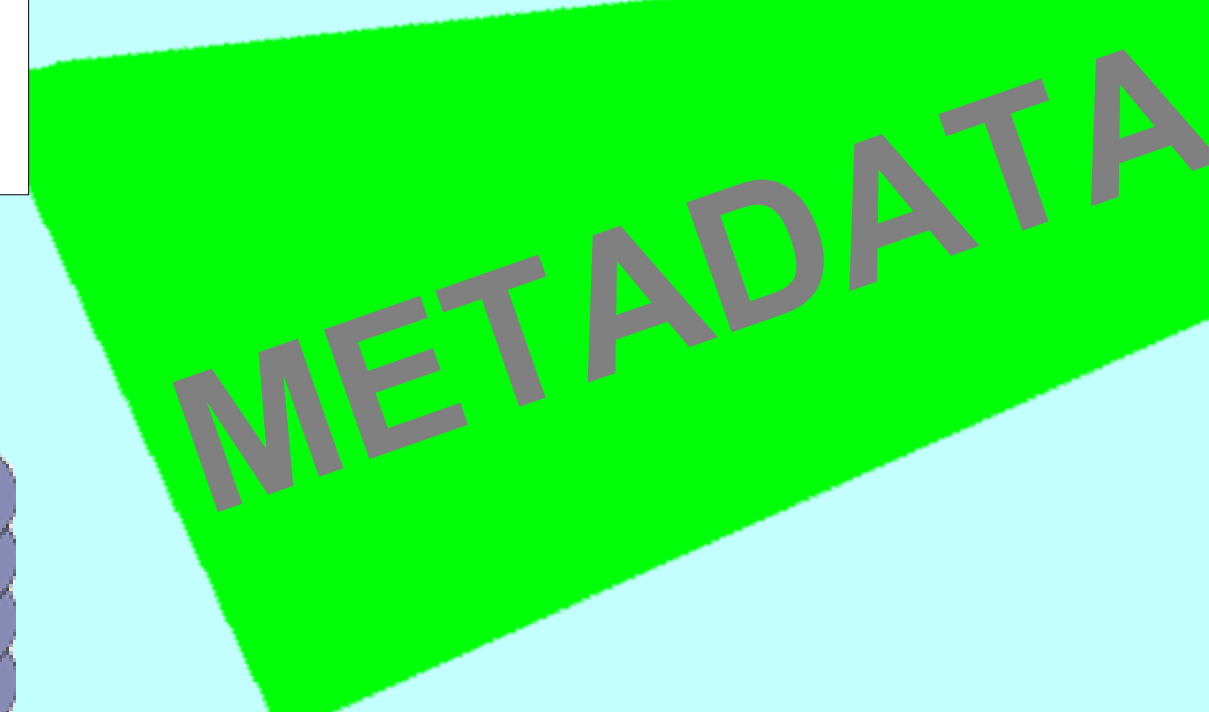
Name secondary data source: Evaluation name and e-mail address:

Assessment dates:
Start date:
End date:

*Some alterations to the development and application of the Checklist can be found in the EDP page of CBS or in CBS' Assessment of Quality, Accuracy and Administrative Data Report for the 10th edition of the Statistical Information System, The Hague, 19-22th August 2009

METADATA

Focus on the (availability of the) information required to understand and use the data in the data source

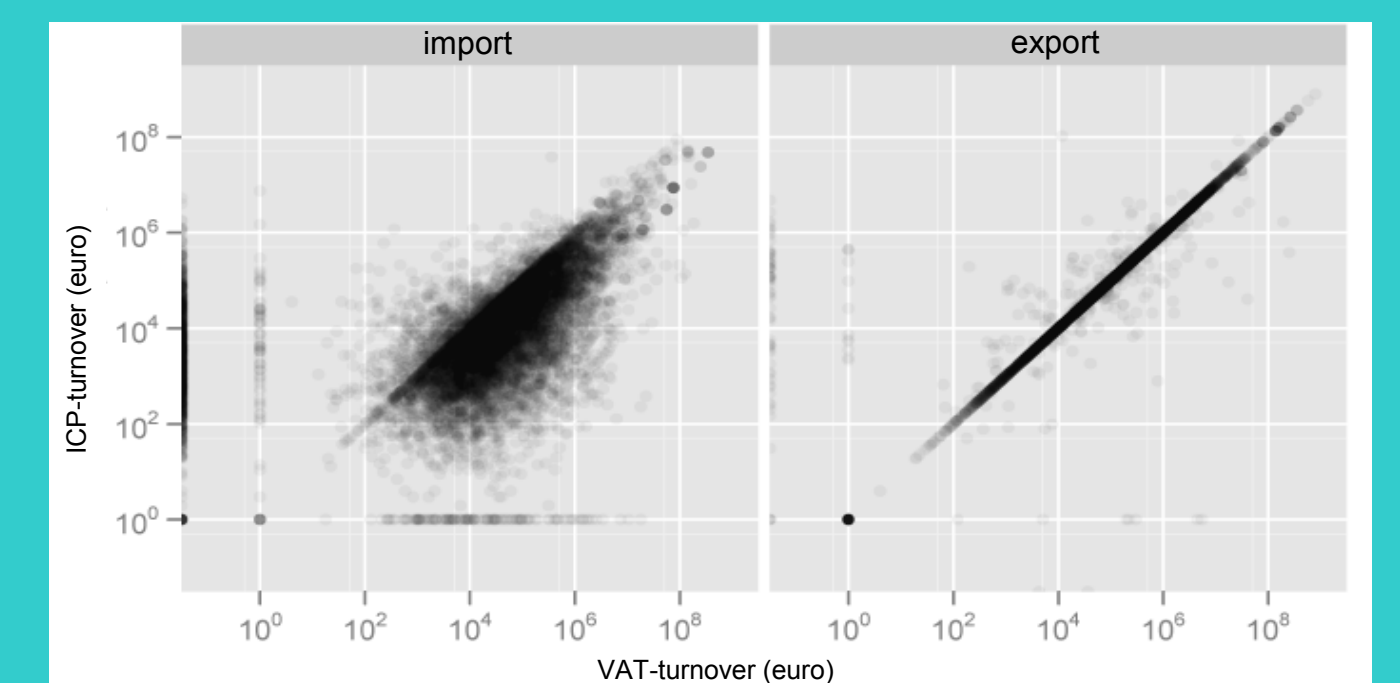


DATA

Focus on the quality of the data

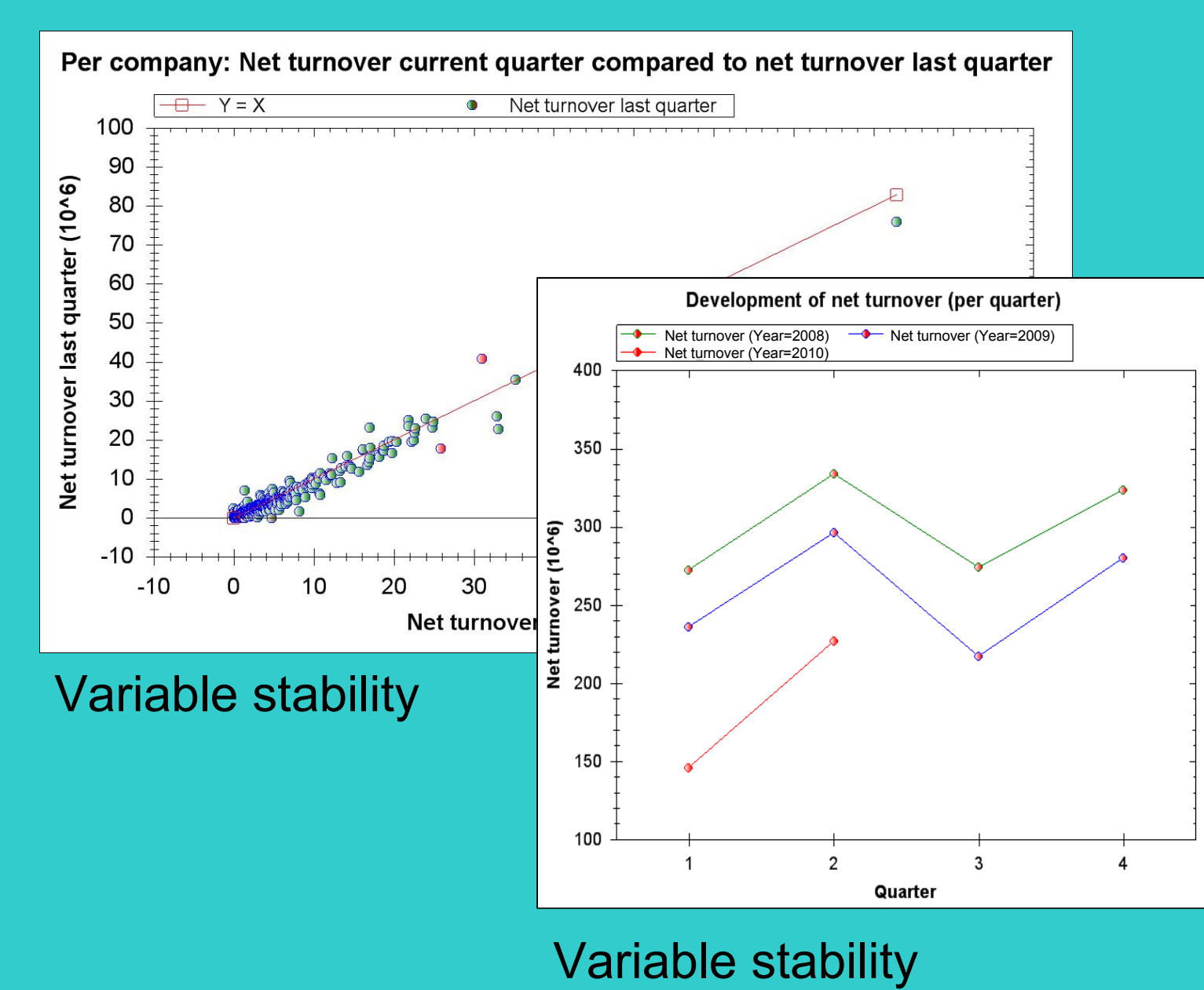


5. Integrability



Alignment

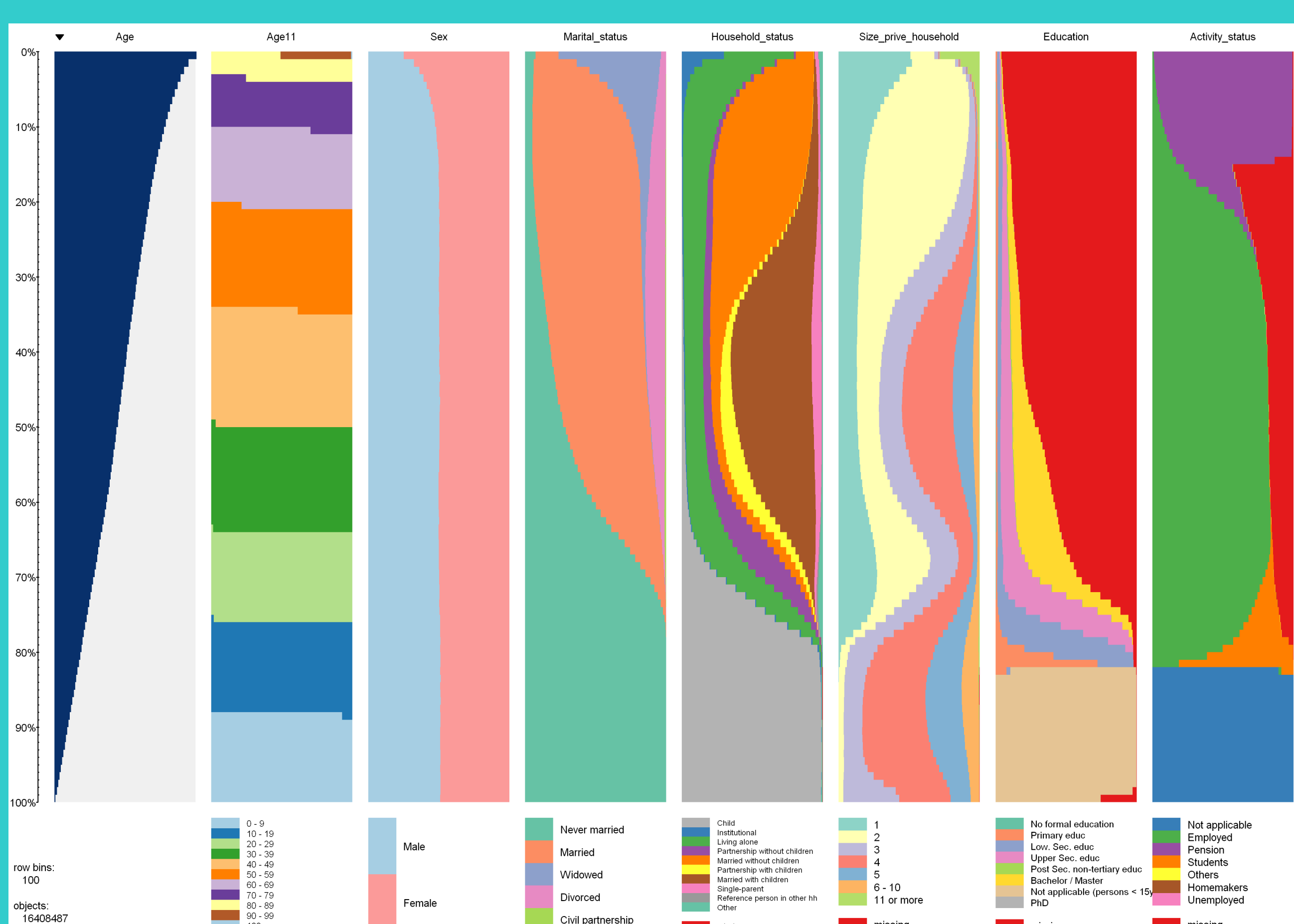
4. Time related



Variable stability

Variable stability

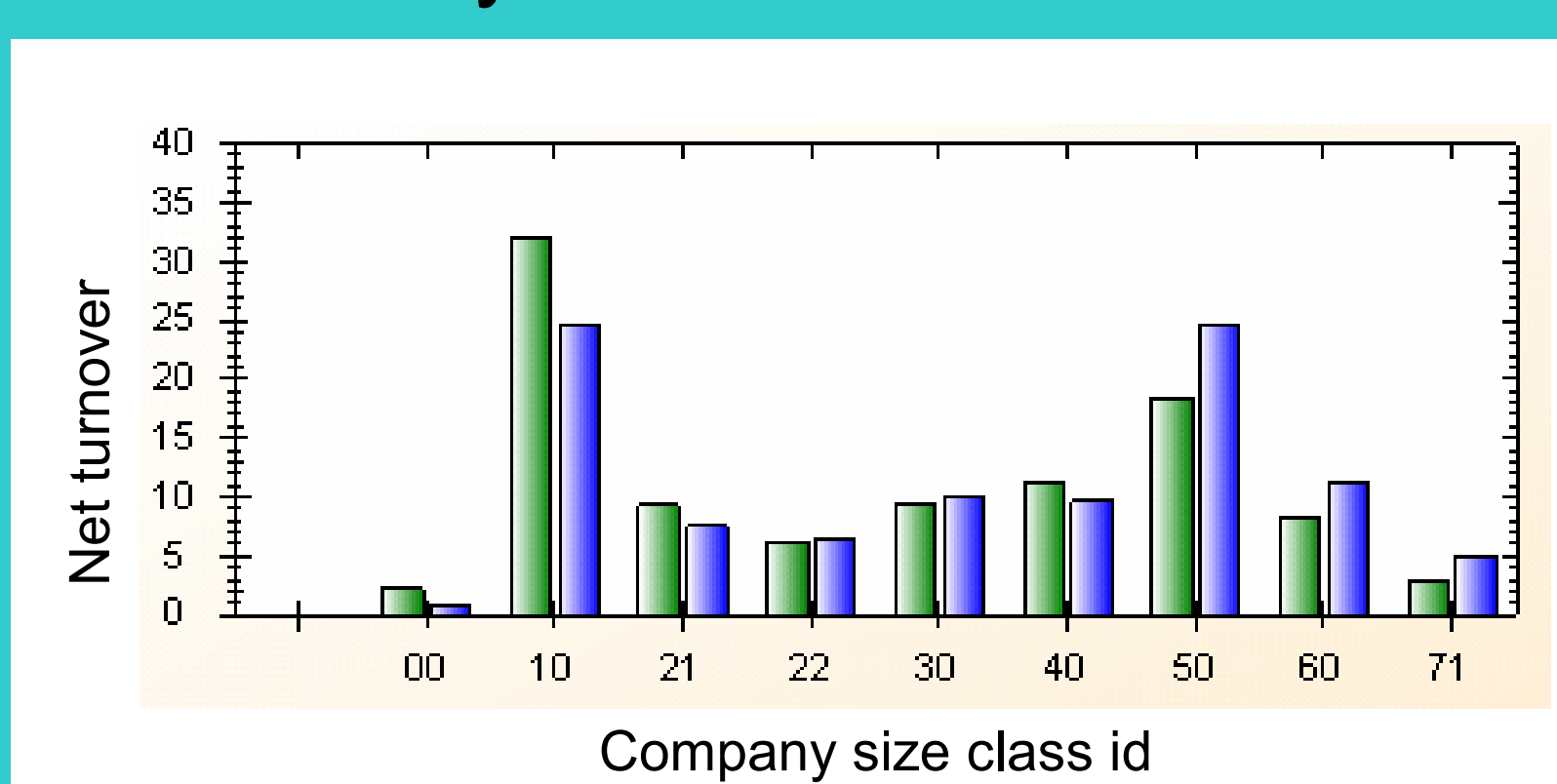
1. Technical checks



Preliminary data exploration

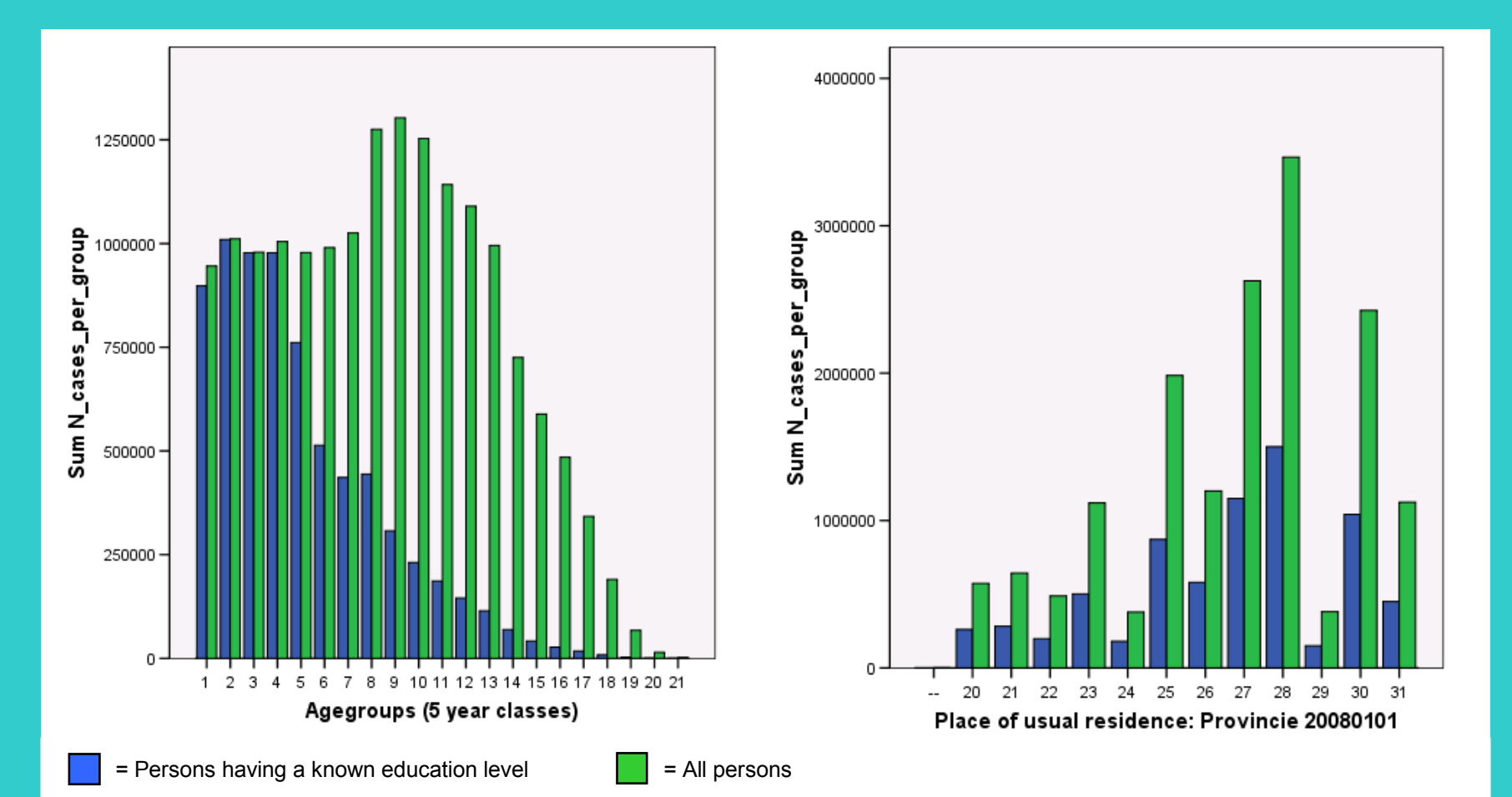
Available in <http://cran.r-project.org/> → packages → tabplot

2. Accuracy



Dubious values

3. Completeness



Undercoverage/ selectivity